



Connecting Colorado



July 2020

"Friends for Fun, Safety and Knowledge"

Gold Wing Road Riders Association, Colorado District, www.coloradogwrra.com



Directors' Details

By Joyce & Rick Elmore, District Directors

We hope you all have found ways to keep yourself occupied during these stay/safer at home months. We've been able to go out on a few rides with friends, practicing social distancing when we stop. This pandemic sure has made a mess of our riding and rally season. With that said, I've copied the announcement from the Arizona District Director here:

Well, It makes me sad to have to go this route, but after meeting with the Casino staff last week, watching COVID testing numbers go through the roof, and having further discussion with the Sky Ute staff, it does not appear that we can go forward with our rally.

The Ute Tribal Council is in agreement to not open at this time. Because we are 7 weeks out, even the BEST they could promise was a 50% capacity which means we would have to notify the majority of those who have already registered that they can't attend.

INSIDE THIS ISSUE

- 1 Directors' Details
- 3 Sideswipe
- 5 From the Cockpit
- 6 Improving Motorist Awareness of Motorcycles
- 8 Greetings from Western Colorado!
- 9 Chapter B
- 10 Chapter G
- 10 Chapter I
- 11 Chapter J
- 12 Chapter L
- 13 Chapter Q

Continued on page 2

Continued from page 1

Susan [the AZ DD] also went on to say that she is considering a ride-In event on that date or later in the year. She has a meeting with a smaller casino soon and will let us know what she decides. It would be a casino with a hotel so we could stay there and take rides from that facility. If this comes to fruition, it would be nice if we could support them in this event. The casino she is speaking with is the Cliff Castle Casino Hotel in Camp Verde, AZ. You can check them out at cliffcastlecasinohotel.com

Chapter Directors, I hope you are all keeping in touch with your Chapter members and are able to do Zoom call gatherings. Chapter G had a Zoom ice cream social and it was fun to see everyone eating one of our favorite desserts.

Also, eight of us got together for lunch at Wholly Stromboli in Fort Lupton recently. It was weird having not many people in the restaurant, but at least we were able to see each other

in person. If you've been able to get out for a ride, great; keep having fun when you can, but please do it safely.

On a personal note, by the time you read this, we will probably be in Utah camping with my sister and her husband. The plan right now is to spend a few days in Utah and then head north, ending up in Glacier National Park. Then the plan is to head south through Yellowstone, the Tetons and then Flaming Gorge.

Of course, the best laid plans are always subject to change and with the COVID Pandemic going on, who knows, but I am keeping a positive attitude that all will go well. Wish us luck and we will let you know how it turns out.

Hopefully, we will be able to see some of you in person when we get back, but with the way 2020 has been going, it may very well be next year.

Take care and be safe out there.





Sideswipe

By Earl Edwards, District Rider Educator

A motorcycle and a car were involved in a sideswipe accident several month ago by one of our members on a motorcycle. The member is doing well and recovering. SIDESWIPE. What is sideswipe for those that don't know? This is another type of collision which involves two or more vehicles. In most cases, the motorcycle direction of travel is diverted by a sideswipe such that energy absorption by the automobile or motorcycle is less than what occurs in a frontal or side impact. Sideswipe can occur for a number of reasons listed below:

Driving erratically. Some drivers in a rush may change lanes abruptly, trying to get to their destination faster. In many cases, this can prevent drivers from seeing vehicles in the other lane until they pull over on top of them. Fast lane changes can quickly lead to sideswipe collisions. If you notice another driver behaving erratically, especially traveling at excessively high speeds or swerving into other lanes of traffic, pull off of the road safely and report them. Getting off the road can prevent you from suffering serious injuries in an accident and reporting the driver to the police can help stop other motorcycle riders from getting hurt.



Merging. As a driver merges into traffic, he must yield to oncoming traffic, fitting his vehicle into the empty space between other cars. Unfortunately, many drivers fail to safely yield as they pull onto highways and interstates. Failure to yield can lead to a sideswipe collision when the oncoming driver cannot move out of the way. Merging causes drivers to need to look in several directions at once. Merging onto busy roads, in particular, can make it difficult to find exactly the perfect place to slip into traffic. When you need to merge, make sure you have adequate room to pull your motorcycle into traffic to complete the maneuver. If you notice another driver trying to merge, try to get your motorcycle out of the way, whether that means speeding up to give more room or dropping your speed to allow that driver into traffic.

Continued on page 4

Continued from page 3

- **Driving under the influence.** Driving under the influence of drugs or alcohol can leave many drivers struggling to control their vehicles. Driving while impaired may result in slipping out of the correct lane or bumping into another vehicle, often at a high rate of speed. Impaired drivers may fail to properly recognize lane designations or drive erratically, increasing the risk of many types of collisions, including sideswipe collisions.
- **Driving drowsy.** Like driving under the influence, drowsy driving can cause drivers to fail to properly note lane designations. Drowsy drivers may drift off behind the wheel and fail to note turns in the road. If the car pulls to one side of the other, if the driver nods off behind the wheel, even for a moment, the car may naturally pull into another lane of traffic. As a driver, you need to stay alert at all times behind the wheel. Your primary responsibility remains driving your vehicle safely, not checking your phone for text messages, eating, carrying on a conversation, or adjusting the temperature in the car. Keep your eyes and attention on the road when you get behind the wheel. If you have had too many drinks, call a designated driver, or use Uber, Lyft, or a taxi service to provide a sober ride. By exercising a few simple safety precautions, you can keep yourself and others on the road safer.
- **Big trucks and other high-clearance vehicles.** Some people also refer to

sideswipe collisions as blind spot accidents since they often occur when a driver fails to notice a motorcycle in his blind spot. Blind spot collisions grow more likely when a high-clearance vehicle, or one with a large blind spot, changes lanes without the driver looking carefully for another motorcycle. Sideswipe accidents involving big trucks and their large blind spots can cause substantial damage to the other vehicle and its passengers, especially on the side that gets hit. While the drivers of larger vehicles, including semi-trucks, sit high off the road to help improve visibility, they still have large blind spots that can contribute to accident risk. When you travel beside big trucks and high-clearance vehicles, try to stay out of their blind spots, even if that means increasing or decreasing your speed to travel in a safer location. If you notice a large vehicle signaling that it plans to change lanes into a lane you occupy, tap your horn and try to get out of the way if you can do so safely.

Even the safest driver cannot always predict accidents risk and prevent an accident ahead of time. You can, however, do several things to decrease your risk of a sideswipe collision as I have talked and referenced. But you can apply the Search, Evaluate and Execute (S.E.E) to help you ride more safely. Take care and be safe.



From the Cockpit

By Chris Toomer, District Ride Coordinator

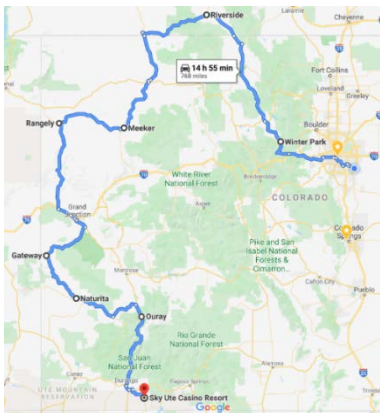
Hot! Hot! HOT! Wow, so many days above 90 already! I hope you're all staying cool and getting out for some rides here and there.

Our original plan for the District this summer was to have a picnic somewhere in the middle between Front Range and Western Slope. With the increase in COVID-19 cases across the state and the increase of various state and local regulations, we are still in a "tentative" mode. I talk regularly with the District Directors (Joyce and Rick) and we are still hopeful we can get together, but we are in a wait-and-see mode at this time.

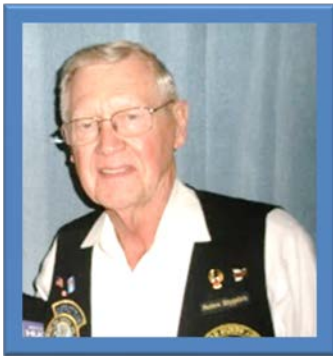


If your Chapters are out for a ride, that's a great opportunity to let others lead and tail. I promote the concepts of leading by example and of helping others be successful. Depending on the technical nature and difficulty of the ride, please consider letting some of your newer or less experienced Road Captains practice, giving them pointers as needed.

With the cancelation of the 4 Corners Rally, well, that has left a hole in my summer. I had planned to ride through Grand Junction on my way to and from the Rally so I could stop and see my daughter who will have just started as a freshman at Colorado Mesa University. Now, I may have to go anyway and stop to fly fish here and there. We must make the best of it, right? 😊



Upcoming Rides - I have heard from Tom Houdek of Chapter J who has a ride planned for late August in lieu of the Four Corners Rally. Tom says of the planned ride: "Since the Four Corners Rally has been cancelled, the proposed route is subject to change, and I now need to add a return leg from SW Colorado. I'm looking at a 4 or 5-day ride. I'll probably head out on Wednesday, August 26th, and return on Saturday or Sunday. If you're interested, please contact me at tghoudek@gmail.com." Thanks, Tom.



Improving Driver Awareness of Motorcycles

By Peter Keppler, District Motorist Awareness Officer

We all know that the most common reason for car-motorcycle accidents is the driver's failure to see the motorcycle resulting in violating the rider's right-of-way. We may think the only reason drivers don't see motorcycles is that they aren't looking, but awareness of motorcycles is more than just looking.

Some of the reasons why drivers don't see motorcycles:

- The driver is not sufficiently cautious or aware of her surroundings
- The driver is not looking in the direction (or for) the motorcyclists
- The motorcycle is inconspicuous among larger vehicles
- The driver misjudges the distance (and speed) of the motorcycle
- The driver is distracted by a cell phone, his GPS, or something or someone in the car



Since a motorcycle is smaller than a car, it will appear to be further away when it really isn't. The difference in size between a motorcycle and a car may cause a driver to subconsciously ignore the motorcycle. Thus, after an accident, drivers often say, "it came out of nowhere" and assume the motorcyclists was speeding. Or the driver didn't see the motorcycle approaching behind another vehicle. This illusion causes drivers making a left turn to think they have time to make the turn when in reality they don't.

Additional factors affecting smaller objects (motorcycles):

- There is less contrast between a smaller object and the background; the difference in color between the object

Continued on page 7

Continued from page 6

and background becomes less as the object becomes smaller.

- The smaller an object, the more the color appears to change to blue/gray, the same color as the sky and asphalt.
- A motorcycle will have poorer resolution than larger vehicles.
- The light reflecting from an object (car, motorcycle, pedestrian, etc.) enables the driver to see the object, and because a motorcycle and rider have less surface area than a car, less light will be reflected to the driver.

-
We as motorcycle riders can make ourselves more visible by:

- Wearing bright colored helmets and clothing
- Keep headlight on bright during the day

- Always use the turn signal when changing lanes and making a turn
- Ride in the left track of the lane and avoid drivers' blind spots
- If possible, avoid riding next to larger vehicles when approaching an intersection
- Use the horn to let drivers know where you are

As drivers and riders, the key to safety is situational awareness - knowing where you are in relation to other vehicles and objects at all times and having an emergency escape route if needed. And remember to talk up motorcycle awareness every chance you get.

Ride Like Your Life Depends on It!





Greetings from Western Colorado!

By Pat Andrews, Membership Enhancement Coordinator

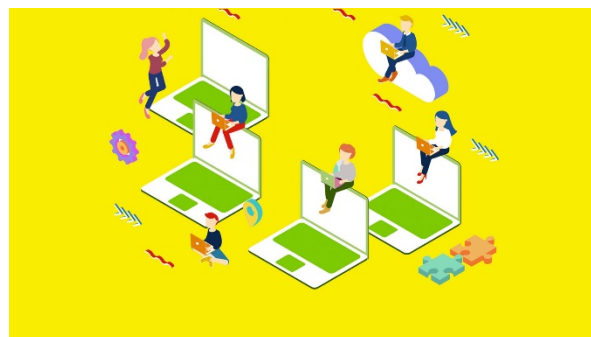
I would like to thank Joyce and Rick Elmore for inviting me to be the new District MEC. I was quite honored by this request. I will do my best to accomplish what is required of my new role.

With that I would like to remind everyone to check your membership to make sure you are current. It is always helpful to check on the National website to make sure all your information is correct, and you have not allowed your membership to lapse.



I am hopeful that this COVID-19 will pass quickly and that we can get back to having our monthly meetings and gatherings. Dave and I have tried to get out and feel the wind in our faces as much as possible. We have gone camping three times so far this year (with the bike), and am hoping that we will be able to camp and travel more before winter sets in.

Until next month, keep the shiny side up and enjoy the wind in your faces.



Chapter B – John & Barb Romans, Directors



From the Chapter B Director's Desk

On the 5th of June, Barb and I hauled our Ruby trike down to Show Low, AZ, to have the transmission repaired. We traveled down through southern Utah, then into northeast Arizona that has been hit hard by COVID-19 and was still pretty much on lockdown. Gas stations and drive through restaurants were open, but not much else and they had a curfew of nobody out after 8:00pm.

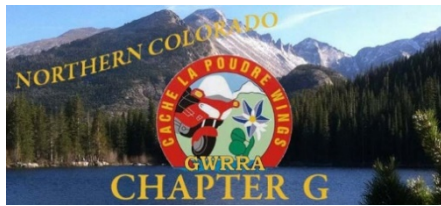
We got in early enough to drop the trike off at a shop called BTM. We checked into our motel and went out to eat. All the restaurants were open but practicing Social Distancing. I found that odd 40 miles south of there and 75 miles to the north are still having major problems with COVID-19. There are several roads leading in and out of Show Low, most of them passing through problem areas.

The next day we headed home. We heard from a friend there was going to be bad weather though southern Utah with high winds and heavy rain, and it will be passing into western Colorado. So, we went a different route over to Gallup, NM, another area hit hard with the virus, which was mostly on lockdown, then north to Cortez which was very windy. We did notice that the Ute Mountain Casino and Motel in Towaoc, CO, was still closed. We decided to go up Dolores Canyon then over Lizard head pass; other than a few blown down trees, the rest of the trip was uneventful.

Now, it is well over a month later and Ruby trike is still in the shop; hopefully, we can go down and get her in a couple more weeks. This is the first time since 2005 that we haven't been active on a motorcycle. Riding almost every weekend or taking a long-distance trip somewhere. We miss riding and all our friends from GWRRA and our Chapter B gatherings. I know some B members are making the best of it, like Steve Jones. He is out there on vacation capturing quite a few states, some camping, some just staying close to home. As far as our gatherings, hopefully, we can have one at the Golden Corral on August 1. We will let you all know if this is going to happen when we get closer to the 1st.

Everyone, please Stay Healthy and Safe!

Chapter G – Hugh & Gina Curley, Directors



From the Chapter G Directors' Desk

Chapter G members have been enjoying themselves on small group and impromptu rides. We did have an organized ride to Wholly Stromboli in Fort Lupton for our Ride for Food. It was a lot of fun.

Our gathering this month will be a hybrid meeting on Saturday, July 18. Those that want a free meal will join us at the Chapter Director's house for an in-person gathering around 7:45 a.m. and those that want to meet online can join us at 8:30 (our normal meeting time) on Zoom. [Zoom.us/j/3037476407](https://zoom.us/j/3037476407).

We have tentatively set the Howl at the Moon ride for September 5th. More information will follow in the next newsletter (August). This is intended to be a District-wide event.

We will be working on our Fall Festival Fun(d) raiser (Turkey Bingo (without turkeys)) beginning the first of August. So far, the venue has not decided when to open and for how many people.

Stay tuned to this spot for future news on these events.

Chapter I – Claude & Nancy Lockhart, Directors



Chapter J – Chris Toomer, Director



From the Chapter J Director's Desk

As most of you know, Chapter J, the Colorado District, and GWRRA lost a great man, friend, GWRRA Member, and avid supporter of motorcycling with the passing of our Assistant Chapter Director, Paul De Baca. As I said in an email to Chapter J members and friends, "...Paul accepted the road in front of him (and behind him) and did his best to make it better for all. He always put others first."



(Photo courtesy of Tom Houdek)

I miss Paul, and my heart goes out to his spouse, Janis, and to their family because I know what it is like to lose the patriarch of the family. There truly are no words to describe the void that is left. Janis has let me know that there will be a memorial for Paul when it is safe for all of us to gather and celebrate the man that was Paul De Baca. Until then, please keep Janis and her family in your thoughts and prayers.

Janis has requested that, in lieu of flowers or food, a contribution be made on behalf of Paul to one of the following organizations:

1. Scholarships for children/teens to attend Sereff World TKD Camp in Honor of Grand Master De Baca. (The next camp will be in 2022.) Contact: Sereff TKD at 303-466-4963 or RSereff@RMI.net to make donations.
2. Ronald McDonald House - www.rmhc-denver.org (The Mile High Hog Chapter that Paul was President of for several years volunteered to bring and serve dinners to the families staying at Ronald McDonald House.)

3. New Dawn Center for Spiritual Growth - <https://www.newdawncsl.org/donate/> (Paul became a Center for Spiritual Living Practitioner and practiced his spiritual beliefs through this church. He was a valued member of the congregation prayer support and felt honored to be of service in this way.)

Virtual Gatherings - While it is unfortunate that Chapter J is not currently able to meet at Piccolos, we are still meeting virtually. I encourage all of you to join one of our virtual Gatherings. For August, I am hopeful we can hold a socially acceptable (and distanced) ice cream Gathering in lieu of our regular Gathering. More to come on that.

Four Corners Rally - I'm sure you've heard the Four Corners Rally has been canceled. If you booked a hotel room at the Sky Ute Casino, you should have received an email stating your reservation has been canceled. If you did not, please call the hotel. There may be some other rides going on at that time, and Arizona is trying to plan a ride-in rally at a local casino down there.

With the cancellation of the 4 Corners Rally, well, that has left a hole in my summer. I had planned to ride through Grand Junction on my way to and from the Rally so I could stop and see my daughter who will have just started as a freshman at Colorado Mesa University. Now, I may have to go anyway and stop to fly fish here and there. We must make the best of it, right? 😊

Ride smart and ride safe!

Chapter L – Chuck Bellmyer, Director



From the Chapter L Director's Desk

Hello there, Chapter L!

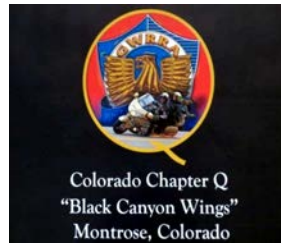
I hope everyone is doing well!

I haven't been riding much. Trying to get some projects done around the house. I did get a new [cell] phone. My flipper died a horrible death! Now I have a smart phone and it's a learning curve! I do have the same email address though. So, email away!

Talked with the Clements Community Center people and we MAY be back before September. We will see. Not much more to put out, so I may have a ride going soon.

Ride safe!

Chapter Q – Gary & Linda Garren, Directors



From the Chapter Q Directors' Desk

We were able to go on a couple of rides in June. We took a ride through the fruit orchards into Palisade and then over Grand Mesa. We intended to eat our sack lunch on top of Grand Mesa, but the wind picked up and it became quite chilly because we were at an elevation of about 10,000 feet. We decided to get off the mountain and had lunch at the park in Cedaredge which turned out to be a good choice. Our 2nd ride was a ride to Redstone. Again, we packed our own lunch and ate lunch at the park. We took a short ride to Marble to check out the BBQ restaurant. The one and only restaurant in Marble was take out only and extremely busy. Glad we packed a lunch. It was so great to be riding again.

We have not been able to have monthly meetings since Daveto's Restaurant is not taking large groups at this time. Bill & Nancy Pierce were nominated as Couple of the Year for 2019. We had not been able to present this award to them since they spent the Winter in Arizona and then we had the COVID-19 virus start after they got back. We had a small group meet at their house and presented their award the first part of June. We definitely have to be flexible right now.

Chapter Q lost one of our long-time members. Ethan Annis passed away June 18. He loved riding and, even when he couldn't ride his motorcycle anymore, he would join the rides in his car. He had a grave side service on the 27th. The Chapter was asked to ride as a group to the cemetery. We had 13 bikes and one car in our procession. He will be missed.



District Team

Officers

Directors
 Joyce & Rick Elmore (CO-G)
 Assistant Directors
 Rich & Linda Fuller (CO-O)
 Rider Education
 Earl Edwards (CO-I)
 Ride Coordinator
 Chris Toomer (CO-J)
 Motorist Awareness
 Peter Keppler (CO-L)
 University Training
 Inez Scholbrock (CO-G)
 Treasurer
 April Hansen (CO-L)

Staff

MFA Coordinators
 Mike & Dorie Werner
 Membership Enhancement
 Pat Andrews (CVO-O)
 Webmasters
 Jim & Janet Wohlford
 Newsletter Editor
 April Hansen (CO-L)
 Photographer
 Donald Redline (CO-L)

Colorado Chapter Directors

Chapter B - Grand Junction John & Barb Romans
 cdchapterb@aol.com
 Chapter G - Fort Collins Hugh & Gina Curley
 director@gwrranortherncolorado.org
 Chapter I - Colorado Springs Clyde & Nancy Lockhart
 directors@springswings.org
 Chapter J - Aurora Chris Toomer
 cd@gwrraco-j.org
 Chapter L - Lakewood Chuck Bellmyer
 chuckbellmyer07@gmail.com
 Chapter Q - Montrose Gary & Linda Garren
 director@gwrracoloradochapterq.org

 Wyoming B - Cheyenne Larry & Barbara Kuzma
 kuz001@aol.com



**EDITOR'S NOTICE: THE DEADLINE
 FOR SUBMITTING NEWSLETTER
 ARTICLES IS THE 17TH OF EACH
 MONTH.**

Gold Wing Road Riders Association
 Colorado District



Web: www.coloradogwrra.com